

Enrichment

PE

English

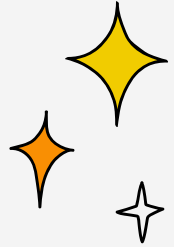
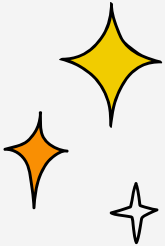
**Sun**

Personal development

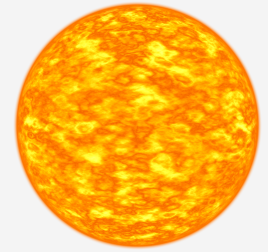
Topic

Mathematics

Reading and phonics



# Sun



A more formal, subject specific curriculum is implemented for many students across KS2 and lower KS3 . Students learn through subject specific teaching in maths and English, working through an adapted national curriculum based on their individual starting points. Science, and foundation subjects are delivered through immersive topic based learning. The well sequenced planned curriculum enables students to engage in more formal, structured and discreet lessons that build on prior learning, consolidating knowledge and skills. Maths is taught through the DFE approved White Rose scheme which helps pupils to develop their conceptual understanding of mathematics by using concrete objects, pictorial representations and abstract thinking. Teaching of maths is pitched towards enabling each student to develop their learning and achieve their full potential. We endeavour to not only develop the mathematics skills and understanding required for later life, but also to foster an enthusiasm and fascination about maths itself. We aim to increase student's confidence, so they are able to express themselves and their ideas using the language of maths with assurance.

Our English curriculum is planned through linking engaging Cornerstone themes with Literacy Tree writing roots to create a well-planned curriculum, adapted for individual academic levels whilst ensuring engaging resources that capture interest levels of students. All pupils read and are read to daily, both for pleasure and for information.

All students experience learning outside of the classroom in Forest school and horticulture lessons. Physical, outdoor education and enrichment experiences provide an enhanced curriculum to further develop students personal development and to prepare students for adulthood.