



Enrichment

PE
Outdoor Ed

English

**Neptune
& Mars**

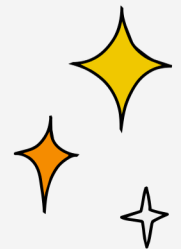
Personal development

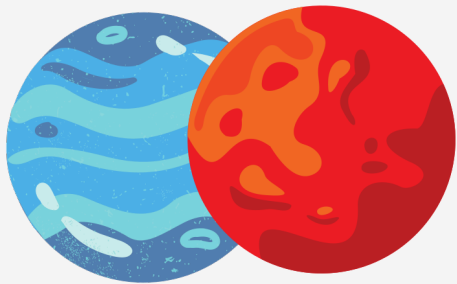
Topic/ASDAN



Mathematics

Reading





Neptune & Mars

A more formal curriculum is implemented for the KS3 students in Neptune and Mars. All students learn through subject-specific teaching in maths and English, working through an adapted national curriculum based on their individual development whilst ensuring a well sequenced curriculum that prepares students to sit functional skills in Key Stage 4. We believe that our students benefit from a broad curriculum that improves engagement by developing knowledge and skills that can be personalised to interests and academic levels. Science and foundation subjects are delivered through immersive topic based learning, generated by both 'big questions' and the termly class reading book which supports the English area of study. Students in Moon are supported to develop a person centred ASDAN qualification portfolio. Courses currently range from those specifically mapped to the preparing for adulthood pathways, personal development qualifications and a selection of short courses that are personalised to the interests and strengths of our students. All students experience learning outside of the classroom in forest school and horticulture lessons. Cooking, physical education, outdoor education and enrichment experiences provide an enhanced curriculum to further develop students personal development and to prepare students for adulthood. All students are encouraged to read daily, both individually and in a group. A number of students in Key Stage 3 are student mentors and, on a weekly basis, read to and share a book with our younger students. As part of SMSC/British values, community and volunteering enrichment activities are a particular focus this academic year for all our students. Our students visit the theatre, attend a careers fair and act as 'responsible' support on trips for our younger students. They take an active part in fundraising activities as council members of our school's PRIDE force. Planned activities include visits to Magna in Rotherham, The National Holocaust centre and a court visit.